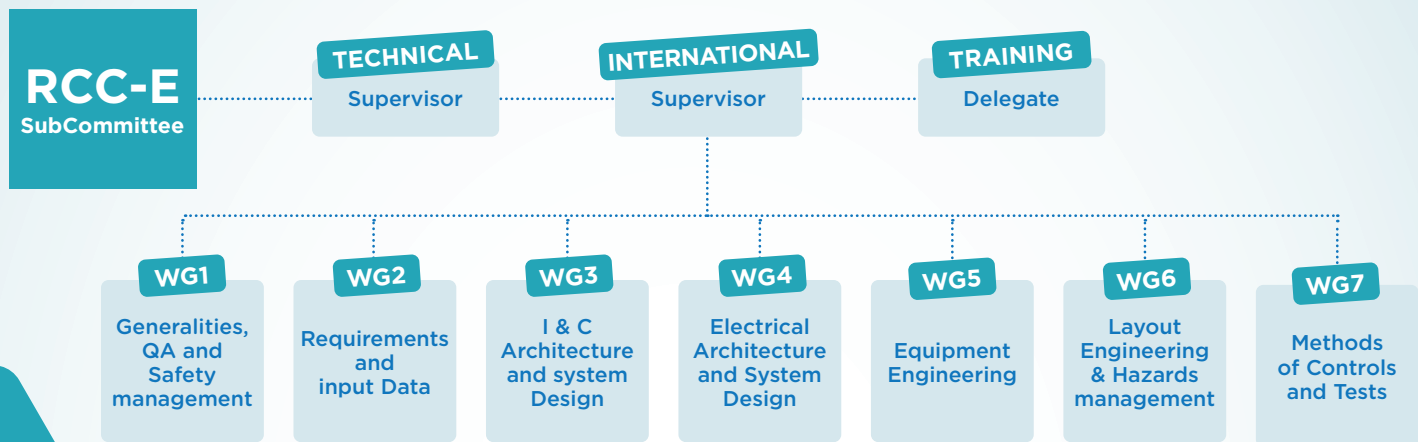


## About AFCEN Subcommittee RCC-E

Design and Construction Rules for Electrical and I&C Systems Equipment and their Layout



### Subcommittee organization

ABOUT 90 EXPERTS INVOLVED IN ONE AT LEAST OF THE 7 WORKING GROUPS:

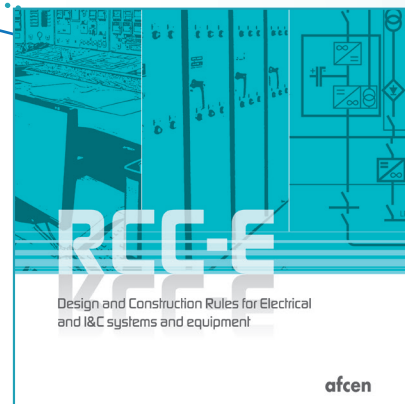
- **WG1:** Safety, Quality and Surveillance management
- **WG2:** Input data and Requirements
- **WG3:** I&C systems and Architecture
- **WG4:** Electrical systems and Architecture
- **WG5:** Equipment engineering and qualification
- **WG6:** Layout Engineering and Hazards management
- **WG7:** Methods of controls and Tests

### Available editions

- **RCC-E 2005** has been used for: UK EPR GDA and FA3 EPR, EPR-TSN, EDF Fleet
- **RCC-E 2012** is used for UKEPR, new projects
- **RCC-E 2016**
- **RCC-E 2019**
- **RCC-E 2022**

### Current edition

This Code is to be used for **next generation of PWR**. We organize the specifications per engineering field: **Architecture and system design, Equipment engineering, Layout engineering and surveillance.**



## RCC-E ELECTRICAL AND I&C SYSTEMS

We incorporate the **feedback of Fukushima** accident (e.g., design extension, mobile means), evolution of **IAEA requirements** (SSR2/1, GSR Part 2), **WENRA recommendations** and **GEN 3 feedback** experience.

To increase international opening and participation by setting up of national Code user groups from UK and China.

## RCC-E 2022 Edition - Content

**VOLUME I:** General and Quality Assurance

**VOLUME II:** Specification of needs

**VOLUME III:** Automation and Control Systems

**VOLUME IV:** Electrical system

**VOLUME V:** Equipment engineering

**VOLUME VI:** Layout of electrical and instrumentation  
and control systems

**VOLUME VII:** Inspection and test methods

**Appendices:** List of standards, Definitions and abbreviations, Documentation, Probationary phase rule - Nuclear management system and Equipment Specification Guidance.

### Associated documents

**PTAN:** «RCC-E 2022 Gap Analysis with the RCC-E 2019»

**PTAN:** «Guidebook for defining RCC-E 2022 Book of Project Data»

## Subcommittee Chair

**Benedict John WILLEY**  
STEERING COMMITTEE CHAIRMAN

**Ronan MORICE**  
STEERING COMMITTEE DEPUTY CHAIRMAN

**Isabelle MORGADO ELLEBOODE**  
TRAINING DELEGATE

## Certified training courses with Partners

From 1 to 4 days, RCCE training courses are available in French and English.

AFCEN/ RCC-E survey the training material and content, structure, trainers.

Delivery of AFCEN Certificate of Attendance.



Join RCC-E Subcommittee and contribute to our work around the globe.

Thank you for visiting our website:

[www.afcen.com](http://www.afcen.com)